

Anti-VEGFR2/Flk-1 Rabbit pAb



WL02294

For Research Use Only. Not For Use In Diagnostic Procedures

Product Information

Product name	Anti-VEGFR2/Flk-1 Rabbit pAb	
Source	Rabbit	
Species reactivity	Human	
Tested applications	Western blot	1:500-1:1000
	Immunohistochemistry	1:100
	<i>*Suggested working dilutions are given as a guide only. It is recommended that the user titrates the product for use in their own experiment using appropriate negative and positive controls.</i>	
Molecular Wt.	151 kDa	
Pack size	50/100/200/500/1000µl	
Storage	Store at -20°C. Avoid freeze/thaw cycles.	
Storage buffer	Supplied in 20 mM phosphate (pH 7.5), 150 mM NaCl, 100 µg/ml BSA, 50% glycerol and less than 0.02% sodium azide	

General Information

Background

Vascular endothelial growth factor (VEGF) is a major growth factor for endothelial cells. VEGFR2 gene encodes one of the two receptors of the VEGF. Two members of this receptor class, Flt-1 and Flk-1, have been shown to represent high affinity receptors for vascular endothelial growth factors (VEGFs). In response to VEGF binding, Flk-1 undergoes autophosphorylation in the kinase insert domain on Tyr 951 and Tyr 996 and in the tyrosine kinase catalytic domain on Tyr 1054 and Tyr 1059. Upon activation, Flk-1 recruits several adapter proteins, including Shc, Grb2, Nck and protein tyrosine phosphatases SHP-1 and SHP-2. The mediation of VEGF signaling by Flk-1 promotes proliferation, chemotaxis, prouting and angiogenesis.

Immunogen

Polyclonal antibody is produced by immunizing animals with a synthetic peptide of VEGFR2/Flk-1.

Purification

Polyclonal antibody was purified by immunogen affinity chromatography.

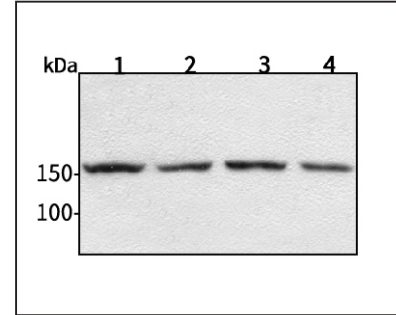
Anti-VEGFR2/Flk-1 Rabbit pAb



WL02294

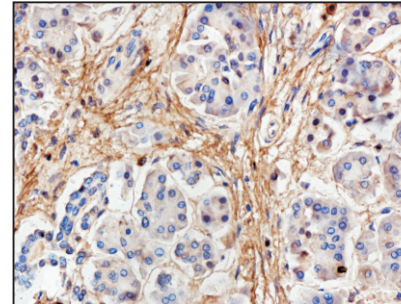
For Research Use Only. Not For Use In Diagnostic Procedures

Product Images



Western blot-Anti-VEGFR2/Flk-1 pAb

Lane 1: Human HepG2 cell lysate 30µg
 Lane 2: Human Hela cell lysate 30µg
 Lane 3: Human BGC-823 cell lysate 30µg
 Lane 4: Human MGC-803 cell lysate 30µg
 Separation gel: 6% polyacrylamide
 Electrophoresis: 100V, 4°C, 3h
 Transmembrane: 100V, 4°C, 1h
 Blocking: 5% w/v nonfat dry milk, 1× TBST, at RT with gentle shaking
 Primary antibody: 1:1000 in blocking buffer, 4°C, overnight
 Secondary antibody (WLA023a) : 1:5000-1:10000, 45min
 Detection: ECL, 30s-2min



Immunohistochemistry-Anti-VEGFR2/Flk-1 pAb

Sample: Human pancreatic cancer tissue
 Antigen retrieval: pH 9.0 Tris-EDTA buffer
 Primary antibody: 1:100, 4°C, overnight
 Secondary antibody-Biotin: 1:150, 37°C, 1h
 Streptavidin-HRP: 1:200, 37°C, 30min
 Color Developing: DAB